

## OUR SERVICES:

- Telephone helpline
- Support and orientation consultations
- Support groups and activities for parents
- Organising ABA and PECS training sessions
- Financial support for certification training courses

## HOW CAN YOU HELP?

### VOUS POUVEZ:

- Become an **active GAMP member**
- Make a **donation** to our non-profit association:  
Les Briques du GAMP - 22 rue du Méridien, 1210 Bruxelles  
IBAN: BE25 0015 2490 6482 - BIC: GEBABEBB
- If you wish to receive a **tax certificate** for donations of 40 euros and more, please make your payment to the following account:  
Caritas Secours – Bd. Abattoir 27, 28 – 1000 Bruxelles  
IBAN : BE14 3100 7989 8683

**Please note:** in order for your donation to reach us, please specify *"Soutien Briques du GAMP 213"* on your bank transfer to Caritas Secours. Thank you.

## INFORMATION AND CONTACT:

*Do you need help and support? Do you seek information, advice, a legal opinion? Do you wish to meet with us and be able to talk in a safe, **confidential** and supportive space? Please make an **appointment** with us, we are here for you.*

*We speak French, English, Italian, Dutch*

### Contact:

Mobile: +32 471 30 40 64 and +32 470 78 81 07  
Telephone: **+32 2 672 13 55**  
Email: **info@gamp.be**

For more information on GAMP's activities and actions, please visit:

**www.gamp.be** and **www.facebook.com/legampbelgique**



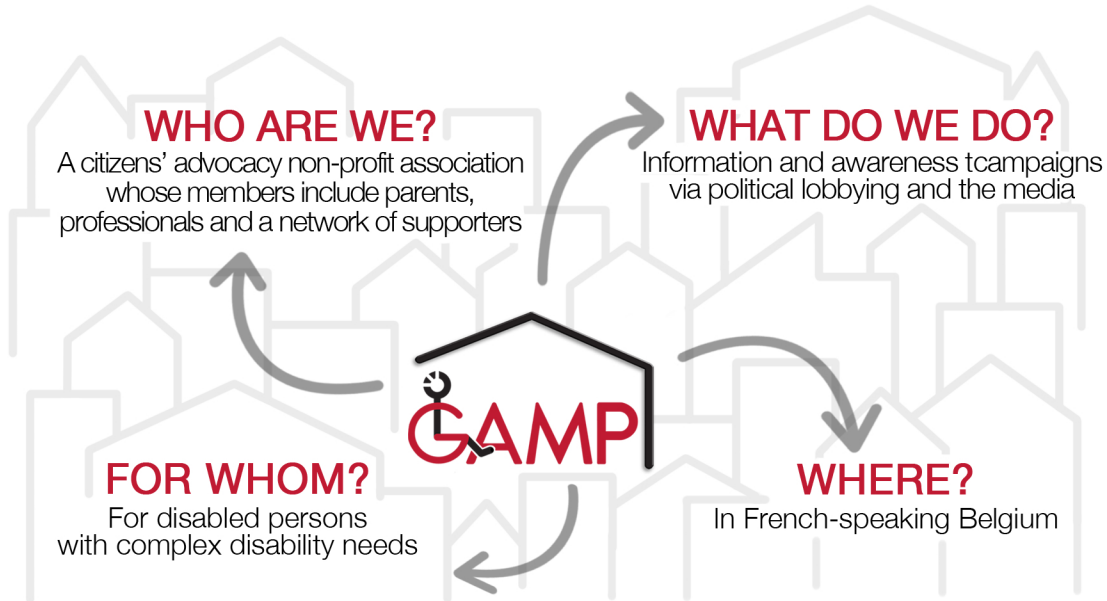
**Groupe d'Action qui dénonce le Manque de Places pour les personnes handicapées de grande dépendance\***

**A PLACE FOR EACH AND EVERY ONE OF US !**

**\*Advocacy group denouncing the shortage of care and support solutions for persons with complex disability needs**

**www.gamp.be - 02.672.13.55 - 22 rue du Méridien, 1210 Brussels**

## ABOUT US



## OUR MISSION STATEMENT

### WHAT ARE COMPLEX DISABILITY NEEDS?

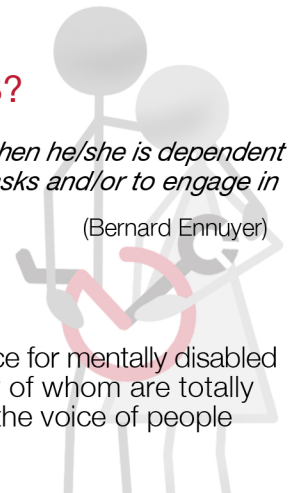
*"A person is considered to have complex disability needs when he/she is dependent on another person to carry out simple, daily life-sustaining tasks and/or to engage in any or all life projects."*

(Bernard Ennuyer)

### WHY GAMP?

GAMP's priority advocacy mission is to be a mouthpiece for mentally disabled persons with complex disability needs, the vast majority of whom are totally dependent on their families and ageing parents. We are the voice of people who have none.

*Our prime objective is for each individual to find solutions tailored to their specific needs and be included as a member of his/her community and society.*



## OUR ACTIONS:

### SIT-INS:

GAMP organised its first sit-in in **2005**! For the first time ever in Belgium, an advocacy group publicly denounced the severe shortage of care and support solutions for persons with complex disability needs. GAMP has since organised over **60 actions** lobbying the Belgian government and Belgian political groups.



### ADVOCATING FOR MORE CARE AND SUPPORT STRUCTURES:

GAMP's advocacy and lobbying efforts have led to the creation of several **care and support facilities** and the concluding of **personal priority agreements** between the Belgian government and newly created care and support structures, providing **200 additional individual places** for persons with complex disability needs.



### LE MÉRIDIEN :

In **2007** the Belgian Federal State granted GAMP a property in the Brussels Saint-Josse commune. In **2016** GAMP shared its renovated premises with **FARRA Bruxelles Capitale** which provided **33 additional individual places**.

### MEDIA CAMPAIGNS:

GAMP has been organising large-scale media campaigns in Belgian francophone newspapers and periodicals since **2013**.

\* "Will I have to kill my son before I die?"



### BELGIUM'S REGIONAL PLANS FOR PERSONS WITH COMPLEX DISABILITY NEEDS:

In **2013** the Human Rights League, acting on behalf of 20 associations including GAMP,



lodged a collective complaint before the European Committee of Social Rights against the Belgian state for its lack of care and support solutions, and won.

All 3 Regions of Belgium have pledged to increase the number of care and support solutions for persons with complex disability needs.